



Smart Sinus Ups

T62 / 6000VA / 4800W

- Pure Sine wave output
- Smart technology
- Real time and calendar
- Super charger (Adjustable battery charger)
- Wide input voltage operation range
- High quality device
- Long lifetime without reparation
- 5 year warranty

Purpose



IT sector, offices,
industry, medical, server
rooms...

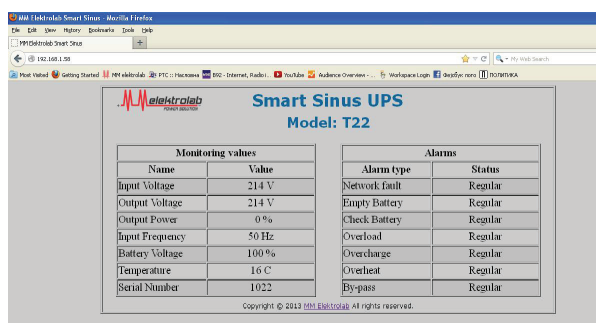
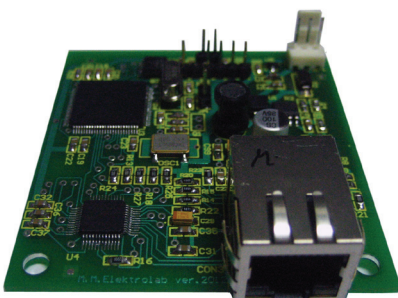


DESCRIPTION:

- Smart Sinus Ups is high quality device, generates a pure Sinusoidal voltage at the output 230V~ +/-5%.
- Carefully selected high quality components from well-known manufacturers.
- Super-charger digital adjustable charger, min 9Ah to max 200Ah with IU characteristics and temperature compensation. Easy to add external batteries for extended autonomy.
- Smart technology enables high reliability, fully automated and independent system.
- Long life -UPS life without repairs over 15 years (not applicable for batteries).
- Wide input voltage operation range (min 150V~ - max 290V~ without degrading power).
- Lots of quality protections.
- Saving event+log alarms in real time.
- Unique concept of Service Support, the purchase of our UPS devices gives you special software through which our product is directly connected via the Internet to the service mail of our company.
- Advanced UPS monitoring software that has the unique concept of generating its own local area network between a UPS device and one or more computers / servers.
- In situations where the mains voltage disappears and the battery is discharged or any alarms occur, UPS before shutting down, executes at the same time shutting down operating systems on all computers / servers, then the UPS device shuts off. In the event of a power failure or any alarm, the UPS sends alerts on monitors of all computers.



- An option of installing a LAN card with SNMP and HTTP protocols, which allows real-time monitoring of UPS devices anywhere in the country and abroad.

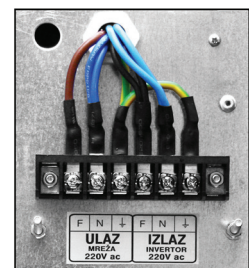
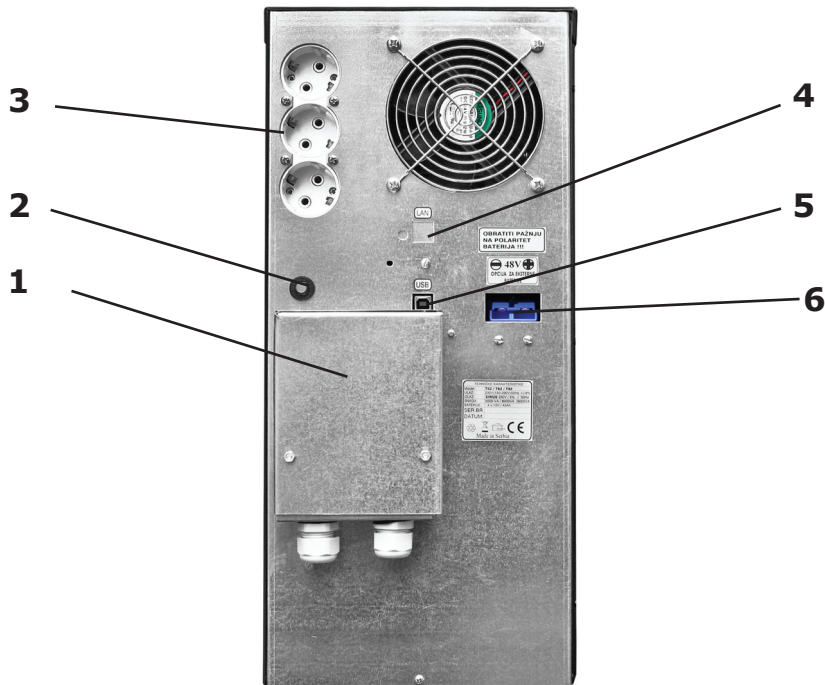


TECHNICAL DATA:

MODEL:	T62
Power:	6000 VA /4800 W
INPUT:	
Nominal Voltage:	230V (min 150V – max 290V without degrading power)
Connection:	Hardwire 3-wire (1ph+N+G)
Frequency:	50Hz +/- 10 %
OUTPUT:	
Connection:	Hardwire 3-wire (1ph+N+G)+ Schuko CEE7 x 3
Nominal Voltage:	230V +/- 5 %
Wave form:	Pure Sine wave
Frequency:	50Hz +/- 0,01%
Transfer time:	0 msec
By-pass:	YES, automatically
Efficiency:	92% (Load=100%)
Topology:	Double conversion
PROTECTIONS:	
Protections::	Short circuit at the output / Overload / Overcharge batteries / Deep batteries discharge / Overvoltage-Undervoltage on the UPS Input / Overvoltage-Undervoltage on the UPS Output / Overheating.
INDICATOR:	
Front panel:	Alfa-numeric display 4x20 character with back light, measurement: -Input/Output voltage,Input frequency,Batteries voltage (V), Charging / Discharging battery %,Output power (VA/%), Work time on batteries,Ups status,Log alarm,Event alarm,Real time-calendar,Charge current battery,Ambiental and Heatsink temperature. -Button On-Off , Parameter setting
BATTERIES:	
Battery number and model:	12V / 45Ah x 4 pcs (48V)
Charger:	Digital adjustable, min 9Ah to max 200Ah with IU characteristics and temperature compensation - only if external battery pack is added.
Expanding work autonomy:	Yes (48V)
Charging time:	6-8h
Autonomy:	10 minutes / 100% output power
COMMUNICATION:	
Communication:	USB / Option LAN (+Software)

SAFETY STANDARDS:	
LVD conformity :	EN 60950
EMC conformity:	EN 62040-2:2006
DIMENSIONS:	
Height:	52 cm
Widht:	22 cm
Depth:	74 cm
GENERAL:	
Green power:	Yes, adjustable
Self test battery:	Yes (10-90days and 1-60min adjustable)
Voltage distortion:	<3%
Operating temperature range:	-20°C to +65°C
IP class:	IP 21
Safety mark:	CE
Weight:	109 kg
WARRANTY:	
Warranty:	Ups 5 years / Battery 2 years

REAR SIDE:



Hardwire connection

1. Hardwire connection
2. Power fuse
3. Connection Schuko CEE7 x 3
4. LAN communication
5. USB communication
6. Connector for external batteries